

RZ Medizintechnik GmbH
Unter Hasslen 20 | D-78532 Tuttlingen
Phone: +49 (0)7462/9470-0
Fax: +49 (0)7462/9470-50
sales@rz-medizintechnik.com
www.rz-medizintechnik.com



3 CHIP HD CAMERA F4

Full HD recording



FULL HD

08.2015

3 CHIP HD-CAMERA F4

We are proud to introduce our new milestone. The F4 brand new camera system combines our F3 system with a Full HD recording function. Pictures and movies can be stored easily on a USB pen drive. Recorded information can be used for an extensive documentation of the procedures.

RECOMMENDED FOR ALL ENDOSCOPIC APPLICATIONS, SPECIALLY **LAP**



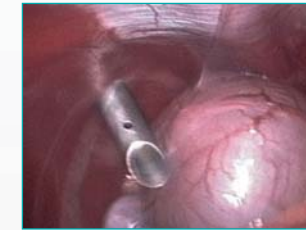
300-001-804
3 Chip HD-Camera F4

DELIVERY CONTAINS:

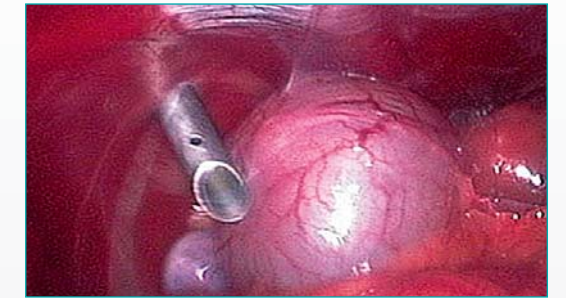
- Main Unit
- Camera head
- USB pen drive
- HDMI - DVI cable
- HDMI cable
- S-Video cable
- Mains cable
- Operating manual

3 CHIP HD-CAMERA F4

3 CHIP FULL HD IMAGING



4:3 standard



Latest 3-Chip MOS 16:9 technology

- 3-Chip Full HD camera with latest MOS technology for brilliant picture quality
- Pure Natural Colors technology
- Multitude of digital video outputs for best possible picture transmission to medical grade monitors

ERGONOMIC CAMERA HEAD



- 3 programmable remote control buttons
- User-friendly multilingual menu allows a large variety of setups for individual procedures and surgeons preferences

FULL HD RECORDING



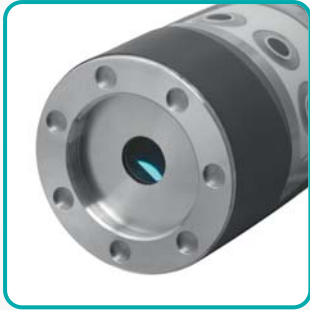
Full HD recording function



Recording and image controls

- Full HD 60fps video recording
- Full HD image saving
- USB pen drive included
- Boost function
- On-screen-menu
- 3 user settings storable
- 2.5x digital zoom
- Freeze function
- Text generator (optional with keyboard)

HIGH-END MULTIFUNCTIONAL CAMERA HEAD



- Ergonomic design for effortless working
- Weight-reduced
- 3 programmable remote control buttons, all important functions available



- Soakable, STERRAD® 100S
- Ergonomic Buttons
- Small and compact design
- Cable length: 3m



TV-COUPLER

All RZ Full HD TV-Adapters with c-mount, soakable



250-025-014 f=14mm
 250-025-017 f=25mm
 250-025-018 f=28mm

Automatic lock

Ocular speculum activates locking mechanism and avoids scratches on the endoscope



300-001-813 f=14mm
 300-001-814 f=25mm
 300-001-815 f=28mm

Manual lock



250-020-025 f=25mm (splitting 90/10)
 250-020-030 f=30mm (splitting 90/10)

Beamsplitter

Allows simultaneous video and direct views

250-022-025 f=25mm
 250-022-030 f=30mm
 90° angled, with swivel and fixation

FIXED FOCAL LENGTH



250-015-036

Zoom

f=15 - 36mm

ZOOM FUNCTION

View 24" - 42" 16:9	View 15" - 21" 4:3	Endoscope Diameter	Recommended TV-Adapter
		2.9mm ARTH HYS URO 4.0mm ARTH HYS URO 5.0mm LAP 10.0mm LAP	f=25mm f=25mm f=14mm - f=18mm f=14mm - f=18mm
		2.9mm ARTH HYS URO 4.0mm ARTH HYS URO 5.0mm LAP 10.0mm LAP	f=14mm f=14mm f=14mm not recommended
		5.0mm LAP 10.0mm LAP	f=25mm - f=50mm f=25mm - f=50mm

SETUP



300-001-802
(Included)



USB pen drive
(Included)



300-001-610
(Optional)



300-001-616
(Optional)



RZ Full HD Monitors (optional)



OPTIONAL ACCESSORIES



300-001-610
Footswitch for HD Cameras,
cable length: 2m



300-001-616
Title generator keyboard, waterproof IP68
US-Layout, USB connector, cable 1.8m
Color: grey, 305x140x15mm, 600gr.



RZ IPS Medical Display

Basic and reliable Full HD Monitors with brilliant picture quality. Closed aluminium frame and glass front for improved scratch resistance and easier cleaning. Wide range of input possibilities.

Model / Type	300-001-240	300-001-244	300-001-246	300-001-247	300-001-248
Size	19" / 14.8x11.9 inches	24" / 20.4x12.8 inches	26" / 22.7x12.7 inches	32" / 27.5x15.4 inches	42" / 34.6x19.6 inches
Resolution	1920x1200 (WUXGA)				
Signal Input	SVideo, Composite, HDMI, DVI				
LCD Panel	IPS				



RZ HD iLumen RADIANCE

Superior HDTV capabilities and sophisticated signal processing produce sharp, accurate, true and very bright images. The RZ iLumen is the only medical-grade flat panel for simultaneous use as a Radiology, Fluoroscopy, Physiology, and/or minimally Invasive Surgery display.

Model / Type	300-010-219	300-010-224	300-010-226	300-001-232
Size	19" / 14.8x11.9 inches	24" / 20.4x12.8 inches	26" / 22.7 x 12.7 inches	32" / 27.5x15.4 inches
Resolution	1280x1024 (SXGA)	1920x1200 (WUXGA)	1920x1080 (FULL HD)	1920x1080 (FULL HD)
Signal Input	SDI, HD-SDI, RGBS, YPbPr, SVideo, Composite, DVI, VGA			
Viewing angle	178°			
LCD Panel	TFT Active Matrix with IPS			

TECHNICAL DATA

System

- Power supply: 100/240 VAC, 50-60 Hz
- Fuses: 2 Fine fuses, 5x20 mm, delay acting 3,15 AH (I=1500A)
- Power consumption: 20 VA
- Image resolution: Full HD 1920 x 1080
- TV resolution: > 1000 lines
- Sensivity: < 3 lux (1/1.4)
- White balance automatically, with data hold
- shutter speed: 1/50 (1/60) to 1/100.000 sec

Camera head

- Aspect ratio: 16:9
- Image sensor: 3 MOS
- Immersible (using the attached cap)
- Soakable, STERRAD® 100S

Video Recording

- Video format: Full HD 1920 x 1080 p / Mpeg4 (H.264 Codec) / Frame rate: 60fps
- Image format: jpg (1920 x 1080)

Video out terminal

- 2x HD SDI
- 1x HDMI / DVI
- 1x Y-Pb-Pr (Component)
- 1x Y/C (PAL / NTSC)
- 1x CVBS (PAL / NTSC)
- LAN (optional)

Standards

- Protection class: I
- Application part: Type BF
- IEC 601-1, EN 60601-1C; classification acc. 93/42/EEC: I

Dimensions

- Control unit: 380 x 120 x 360 mm (WxHxD); 11 kg
- Camera Head: \varnothing 38.5mm, length: 81mm, 145g

